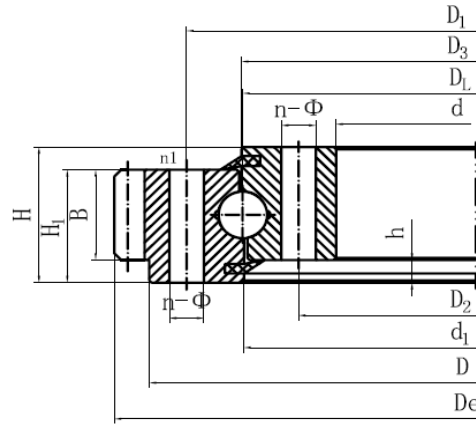




无锡立达齿轮制造有限公司

WUXI LIDA GEAR MANUFACTURING CO., LTD



JB/T2300-1999

011 serie

012 serie

Number	Basic Type	Dimensions			Installation hole size				Structure size				Gear Data					Tangential Tooth Load		Weight Reference (KG)	
		Outer teeth DL mm	D mm	d mm	H mm	D ₁ mm	D ₂ mm	n	Φ mm	n ₁	D ₃ mm	d ₁ mm	H ₁ mm	h mm	B mm	x	m mm	z	De mm		Normalizing Z 10 ⁴ N
1	011.20.200	280	120	60	248	152	12	16	2	201	199	50	10	40	0	3	98	300	1.5	2.1	18
2	011.20.224	304	144	60	272	176	12	16	2	225	223	50	10	40	0	3	105	321	1.5	2.1	21
3	011.20.250	330	170	60	298	202	18	16	2	251	249	50	10	40	0	4	86	352	2	2.8	23
4	011.20.280	360	200	60	328	232	18	16	2	281	279	50	10	40	0	4	94	384	2	2.8	26
5	011.25.315	408	222	70	372	258	20	18	2	316	314	60	10	50	0	5	85	435	3.1	4.5	41
6	011.25.355	448	262	70	412	298	20	18	2	356	354	60	10	50	0	5	93	475	3.1	4.5	53
7	011.25.400	493	307	70	457	343	24	18	2	401	399	60	10	50	0	6	86	528	3.7	5.2	60
8	011.25.450	543	357	70	507	393	24	18	2	451	449	60	10	50	0	6	94	576	3.7	5.2	73
9	011.30.500	602	398	80	566	434	20	18	4	501	498	70	10	60	+0.5	5	123	629	3.7	5.2	85
	6															102	628.8	4.5	6.2		
9'	011.25.500	602	398	80	566	434	20	18	4	501	499	70	10	60	+0.5	5	123	629	3.7	5.2	85
	6															102	628.8	4.5	6.2		
10	011.30.560	662	458	80	626	494	20	18	4	561	558	70	10	60	+0.5	5	135	689	3.7	5.2	95
	6															112	688.8	4.5	6.2		
10'	011.25.560	662	458	80	626	494	20	18	4	561	559	70	10	60	+0.5	5	135	689	3.7	5.2	95
	6															112	688.8	4.5	6.2		



无锡立达齿轮制造有限公司

WUXI LIDA GEAR MANUFACTURING CO., LTD

Number	Basic Type	Dimensions			Installation hole size				Structure size				Gear Data					Tangential Tooth Load		Weight Reference (KG)	
	Outer teeth DL mm	D mm	d mm	H mm	D ₁ mm	D ₂ mm	n	Φ mm	n ₁	D ₃ mm	d ₁ mm	H ₁ mm	h mm	B mm	x	m mm	z	De mm	Normalizing Z 10 ⁴ N		Tempering T 10 ⁴ N
11	011.30.630	732	528	80	696	564	24	18	4	631	628	70	10	60	+0.5	6	126	772.8	4.5	6.2	110
	8															94	774.4	6	8.3		
11'	011.25.630	732	528	80	696	564	24	18	4	631	629	70	10	60	+0.5	6	126	772.8	4.5	6.2	110
	8															94	774.4	6	8.2		
12	011.30.710	812	608	80	776	644	24	18	4	711	708	70	10	60	+0.5	6	139	850.8	4.5	6.2	120
	8															104	854.4	6	8.3		
12'	011.25.710	812	608	80	776	644	24	18	4	711	709	70	10	60	+0.5	6	139	850.8	4.5	6.2	120
	8															104	854.4	6	8.9		
13	011.40.800	922	678	100	878	722	30	22	6	801	798	90	10	80	+0.5	8	118	966.4	8	11.1	220
	10															94	968	10	14		
13'	011.30.800	922	678	100	878	722	30	22	6	801	798	90	10	80	+0.5	8	118	966.4	8	11.1	220
	10															94	968	10	14		
14	011.40.900	1022	778	100	978	822	30	22	6	901	898	90	10	80	+0.5	8	130	1062.4	8	11.1	240
	10															104	1068	10	14		
14'	011.30.900	1022	778	100	978	822	30	22	6	901	898	90	10	80	+0.5	8	130	1062.4	8	11.1	240
	10															104	1068	10	14		
15	011.40.1000	1122	878	100	1078	922	36	22	6	1001	998	90	10	80	+0.5	10	116	1188	10	14	270
	12															96	1185.6	12	16.7		
15'	011.30.1000	1122	878	100	1078	922	36	22	6	1001	998	90	10	80	+0.5	10	116	1188	10	14	270
	12															96	1185.6	12	16.7		
16	011.40.1120	1242	998	100	1198	1042	36	22	6	1121	1118	90	10	80	+0.5	10	127	1298	10	14	300
	12															106	1305.6	12	16.7		
16'	011.30.1120	1242	998	100	1198	1042	36	22	6	1121	1118	90	10	80	+0.5	10	127	1298	10	14	300
	12															106	1305.6	12	16.7		



无锡立达齿轮制造有限公司

WUXI LIDA GEAR MANUFACTURING CO., LTD

Number	Basic Type	Dimensions			Installation hole size				Structure size					Gear Data				Tangential Tooth Load		Weight Reference (KG)	
	Outer teeth DL mm	D mm	d mm	H mm	D ₁ mm	D ₂ mm	n	Φ mm	n ₁	D ₃ mm	d ₁ mm	H ₁ mm	h mm	B mm	x	m mm	z	De mm	Normalizing Z 10 ⁴ N		Tempering T 10 ⁴ N
17	011.45.1250	1390	1110	110	1337	1163	40	26	5	1252	1248	100	10	90	+0.5	12	118	1449.6	13.5	18.8	420
	14															101	1453.2	15.8	21.9		
17'	011.35.1250	1390	1110	110	1337	1163	40	26	5	1251	1248	100	10	90	+0.5	12	118	1449.6	13.5	18.8	420
	14															101	1453.2	15.5	21.9		
18	011.45.1400	1540	1260	110	1487	1313	40	26	5	1402	1398	100	10	90	+0.5	12	131	1605.6	13.5	18.8	480
	14															112	1607.2	15.8	21.9		
18'	011.35.1400	1540	1260	110	1487	1313	40	26	5	1401	1398	100	10	90	+0.5	12	131	1605.6	13.5	18.8	480
	14															112	1607.2	15.8	21.9		
19	011.45.1600	1740	1460	110	1687	1513	45	26	5	1602	1598	100	10	90	+0.5	14	127	1817.2	15.8	21.9	550
	16															111	1820.8	18.1	25		
19'	011.35.1600	1740	1460	110	1687	1513	45	26	5	1601	1598	100	10	90	+0.5	14	127	1817.2	15.8	21.9	550
	16															111	1820.8	18.1	25		
20	011.45.1800	1940	1660	110	1887	1713	45	26	5	1802	1798	100	10	90	+0.5	14	141	2013.2	15.8	21.9	610
	16															123	2012.8	18.1	25		
20'	011.35.1800	1940	1660	110	1887	1713	45	26	5	1801	1798	100	10	90	+0.5	14	141	2013.2	15.8	21.9	610
	16															123	2012.8	18.1	25		
21	011.60.2000	2178	1825	144	2110	1891	48	33	8	2202	1998	132	12	120	+0.5	16	139	2268.8	24.1	33.3	1100
	18															123	2264.4	27.1	37.5		
21'	011.40.2000	2178	1825	144	2110	1891	48	33	8	2201	1998	132	12	120	+0.5	16	139	2268.8	24.1	33.3	1100
	18															123	2264.4	27.1	37.5		
22	011.60.2240	2418	2065	144	2350	2131	48	33	8	2242	2238	132	12	120	+0.5	16	153	2492.8	24.1	33.3	1250
	18															136	2498.4	27.1	37.5		
22'	011.40.2240	2418	2065	144	2350	2131	48	33	8	2241	2238	132	12	120	+0.5	16	153	2492.8	24.1	33.3	1250
	18															136	2498.4	27.1	37.5		



无锡立达齿轮制造有限公司

WUXI LIDA GEAR MANUFACTURING CO., LTD

Number	Basic Type	Dimensions			Installation hole size				Structure size					Gear Data				Tangential Tooth Load		Weight Reference (KG)	
		Outer teeth DL mm	D mm	d mm	H mm	D ₁ mm	D ₂ mm	n	Φ mm	n ₁	D ₃ mm	d ₁ mm	H ₁ mm	h mm	B mm	x	m mm	z	De mm		Normalizing Z 10 ⁴ N
23	011.60.2500	2678	2325	144	2610	2391	56	33	8	2502	2498	132	12	120	+0.5	18	151	2768.4	27.1	37.5	1400
	20															136	2776	30.1	41.8		
23'	011.40.2500	2678	2325	144	2610	2391	56	33	8	2501	2498	132	12	120	+0.5	18	151	2768.4	27.1	37.5	1400
	20															136	2776	30.1	41.8		
24	011.60.2800	2978	2625	144	2910	2691	56	33	8	2802	2798	132	12	120	+0.5	18	168	3074.4	27.1	37.5	1600
	20															151	3076	30.1	41.8		
24'	011.40.2800	2978	2625	144	2910	2691	56	33	8	2802	2798	132	12	120	+0.5	18	168	3074.4	27.1	37.5	1600
	20															151	3076	30.1	41.8		
25	011.75.3150	3376	2922	174	3286	3014	56	45	8	3152	3147	162	12	150	+0.5	20	171	3476	37.7	52.2	2800
	22															155	3471.6	41.5	57.4		
25'	011.50.3150	3376	2922	174	3286	3014	56	45	8	3152	3147	162	12	150	+0.5	20	171	3476	37.7	52.2	2800
	22															155	3471.6	41.5	57.4		
26	011.75.3550	3776	3322	174	3686	3414	56	45	8	3552	3547	162	12	150	+0.5	20	191	3876	37.7	52.2	3200
	22															174	3889.6	41.5	57.4		
26'	011.50.3550	3776	3322	174	3686	3414	56	45	8	3552	3547	162	12	150	+0.5	20	191	3876	37.7	52.2	3200
	22															174	3889.6	41.5	57.4		
27	011.75.4000	4226	3772	174	4136	3864	60	45	10	4002	3997	162	12	150	+0.5	22	194	4329.6	41.5	57.4	3600
	25															171	4345	47.1	65.2		
27'	011.50.4000	4226	3772	174	4136	3864	60	45	10	4002	3998	162	12	150	+0.5	22	194	4329.6	41.5	57.4	3600
	25															171	4345	47.1	65.2		
28	011.75.4500	4726	4272	174	4636	4364	60	45	10	4502	4497	162	12	150	+0.5	22	217	4835.6	41.5	57.4	4000
	25															191	4845	47.1	65.2		
28'	011.50.4500	4726	4272	174	4636	4364	60	45	10	4502	4497	162	12	150	+0.5	22	217	4835.6	41.5	57.4	4000
	25															191	4845	47.1	65.2		